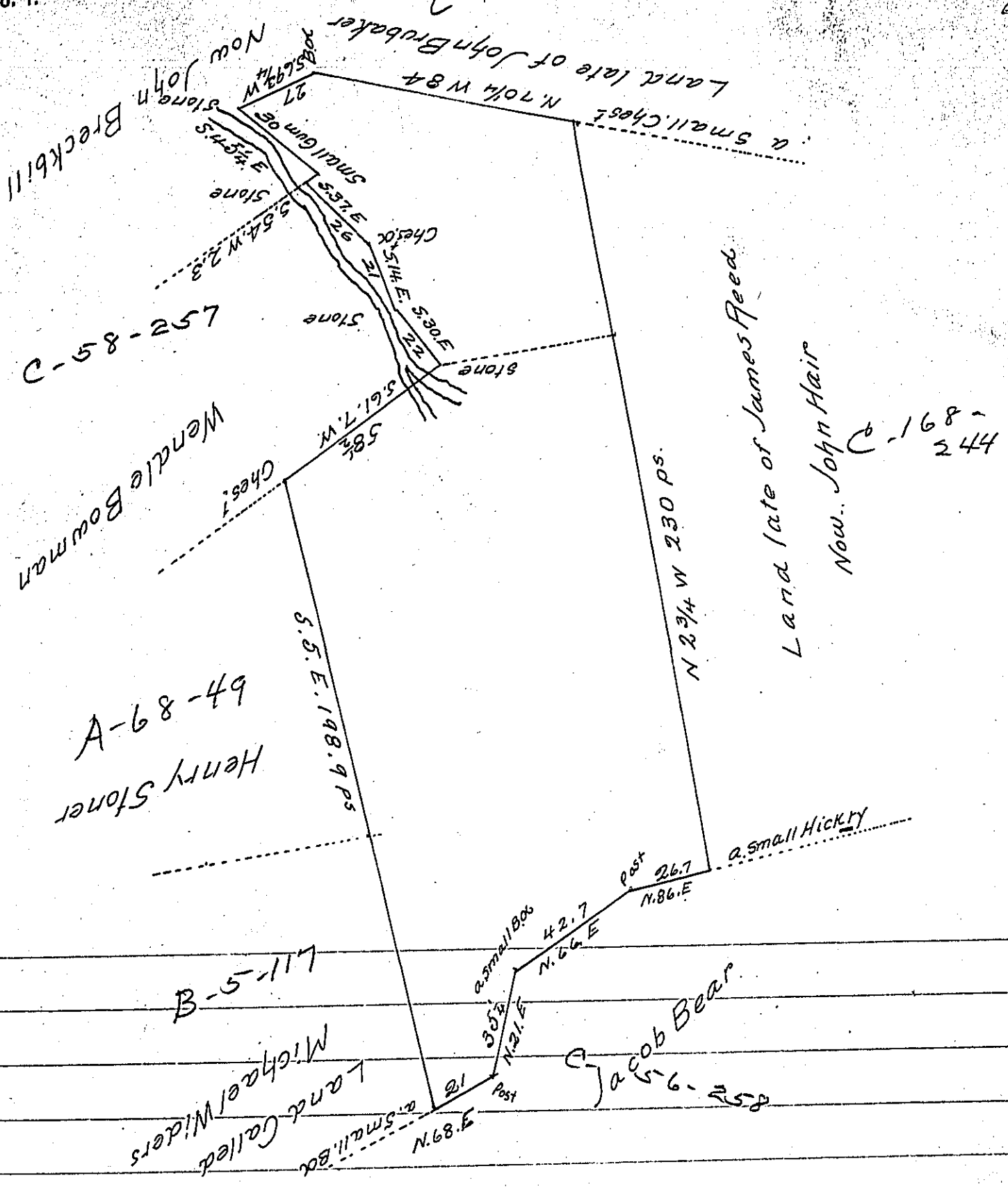


62-1-29



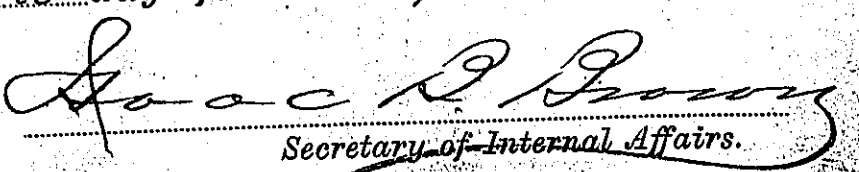
A Draught of a piece or Tract of Land situate part in Barl township & part in Strasbury township Lancaster County. Containing One Hundred and Forty eight Acres and the usual allowance of six pr Cent for Roads &c. Surveyed the 21st Day of May A.D. 1787 for Henry Kindig. By Virtue of a Warrant Dated the 24th Day of November A.D. 1769

H Henry Peam D.S.

To John Lukens Esq^r S. G.

N^o 297 of Wt

IN TESTIMONY that the above is a copy of the original remaining on file in the Department of Internal Affairs of Pennsylvania, made conformably to an Act of Assembly approved the 16th day of February, 1833, I have hereunto set my Hand and caused the Seal of said Department to be affixed at Harrisburg, this twenty third day of May 1905


 Secretary of Internal Affairs.